

# Zoom Camera

# ATC-HZ8225Z-LTA

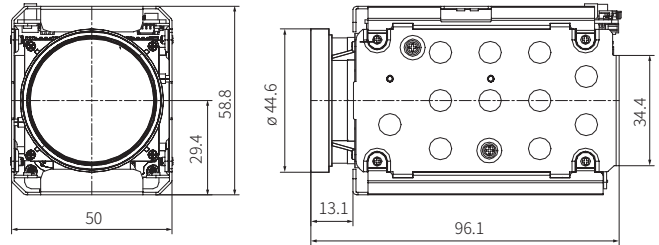


- 1/2.8" Progressive Scan STARVIS CMOS
- 300x AF Zoom(25x optical zoom, 12x digital zoom)
- 1080p 60/50/30/25fps
- Mechanical Day&Night
- True WDR
- 3D DNR, Defog
- UART RS232-TTL(Pleco-D, Pelco C, VISCA, Hitachi)

# ATC-HZ8225Z-LTA



· Dimensions



## Specifications

|                                    |   |
|------------------------------------|---|
| <b>Image Sensor</b>                | 1/2.8" Progressive Scan STARVIS CMOS  |
| <b>Effective Pixels</b>            | 2.13MP 1945(H) x 1097(V)  |
| <b>Video Output mode</b>           | <b>Common</b> HD-SDI/EX-SDI(V1.0)/EX-SDI(V2.0)/CVBS<br><b>AVI/TVI/LVDS</b> TVI/AVI/LVDS       |
| <b>Max. Video Resolution</b>       | HD-SDI/LVDS:1080p@60(50fps),<br>EX-SDI/TVI/AVI:1080p@30(25fps)                                |
| <b>Synchronization system</b>      | Internal  |
| <b>Min.Illumination</b>            | Day mode: 0.1Lux(F1.6)<br>Night mode: 0.05Lux(F1.6/ IR-cut filter on)<br>Sens-Up off, AGC45dB |
| <b>S/N Rate</b>                    | More than 52dB(AGC off, Sens-Up off)  |
| <b>Lens</b>                        | <b>Type</b> AF Optical zoom lens(DC Iris), IR Corrective                                      |
|                                    | <b>Focal Length</b> f=5.3~130mm   |
|                                    | <b>F-value</b> F1.6(W)~4.3(T)   |
|                                    | <b>Angle of View</b> Horizontal 59°(W)~2.4°(T),<br>Vertical 33.6°(W)~1.4°(T)                  |
| <b>Zoom ratio</b>                  | Optical 25x / Digital 12x   |
| <b>Focus Min.Working Distance</b>  | 0.1m(Wide)/1.5m(Tele)~∞   |
| <b>Focus Control</b>               | Auto/Interval/One Push/Manual/Presets   |
| <b>AE mode</b>                     | Auto/Shutter Priority/Iris Priority/Manual  |
| <b>Brightness</b>                  | 0~14  |
| <b>Manual Shutter</b>              | 1/1, 1/2, 1/4(3), 1/8(6), 1/15(12), 1/30(25), 1/60(50)~1/30000                                |
| <b>Manual Iris</b>                 | F1.6~F19, Close   |
| <b>Sense-up</b>                    | Off~32fields  |
| <b>ETC</b>                         | Spot AE, Slow AE  |
| <b>D&amp;N Mode</b>                | Auto/Day(Color)/Night(BW)/External-H or L   |
| <b>White Balance</b>               | AUTO/One Push/Indoor/Outdoor/ATW/Manual   |
| <b>Image Freeze</b>                | Off/On  |
| <b>Image Flip</b>                  | Off/Horizontal/Vertical/H+V(180°Flip)   |
| <b>Privacy Mask Zone</b>           | 8 Zones/14 mask color selectable  |
| <b>Digital Image Stabilization</b> | Yes   |
| <b>Motion Detection</b>            | 4 Zones   |

|                              |  |
|------------------------------|--|
| <b>D-WDR</b>                 | Off/Low/Middle/High  |
| <b>WDR</b>                   | Off/On,<br>Adjustable(Level:0~29, Contrast:0~5, Bright:0~19)         |
| <b>BLC</b>                   | Off/On, Area selectable  |
| <b>HLC</b>                   | Off/On, Area selectable  |
| <b>AGC</b>                   | Max.58dB   |
| <b>Sharpness</b>             | Adjustable(0~15)   |
| <b>3D-DNR</b>                | On/Off(1~5)  |
| <b>2D-DNR</b>                | Auto/Manual  |
| <b>Defog</b>                 | Off/Low/Middle/High  |
| <b>Presets Position</b>      | 256 position Presets(Zoom,Focus),<br>16Memory Presets, Custom Preset |
| <b>Language</b>              | English,Japanese,Russian,Spanish,German,<br>France,Portuguese        |
| <b>UART</b>                  | <b>Remote</b> RS232 TTL + 5.0V(+3.3V compatible)                     |
|                              | <b>Protocol</b> VISCA/Pelco-D/Pelco-P/Hitachi: Automatic detection   |
|                              | <b>Baud rate</b> 2400/4800/9600/19200/38400/57600/115200bps          |
| <b>UTC</b>                   | TVI-UTC/AVI-UTC  |
| <b>Supply Voltage</b>        | 12VDC(9V to 15VDC)   |
| <b>Power Consumption</b>     | Max.5.3W / Non-working zoom&focus 3.6W                               |
| <b>Dimension(mm)</b>         | 50.0x58.8x96.1mm   |
| <b>Weight</b>                | Approx.241g  |
| <b>Operating Temperature</b> | -10°C~+50°C, Humidity(20~80%)  |
| <b>Storage Temperature</b>   | -20°C~+60°C, Humidity(20~95%)  |